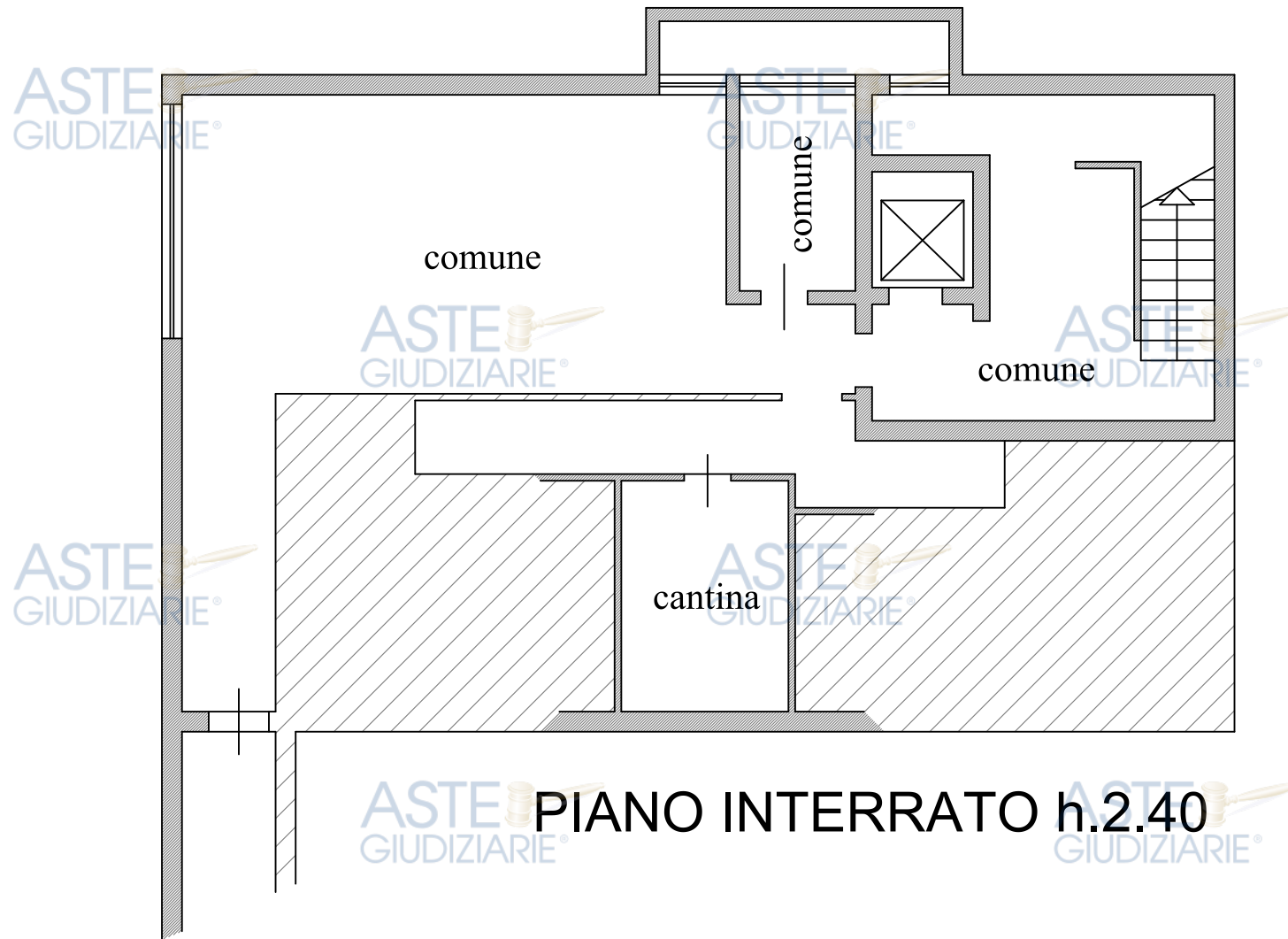
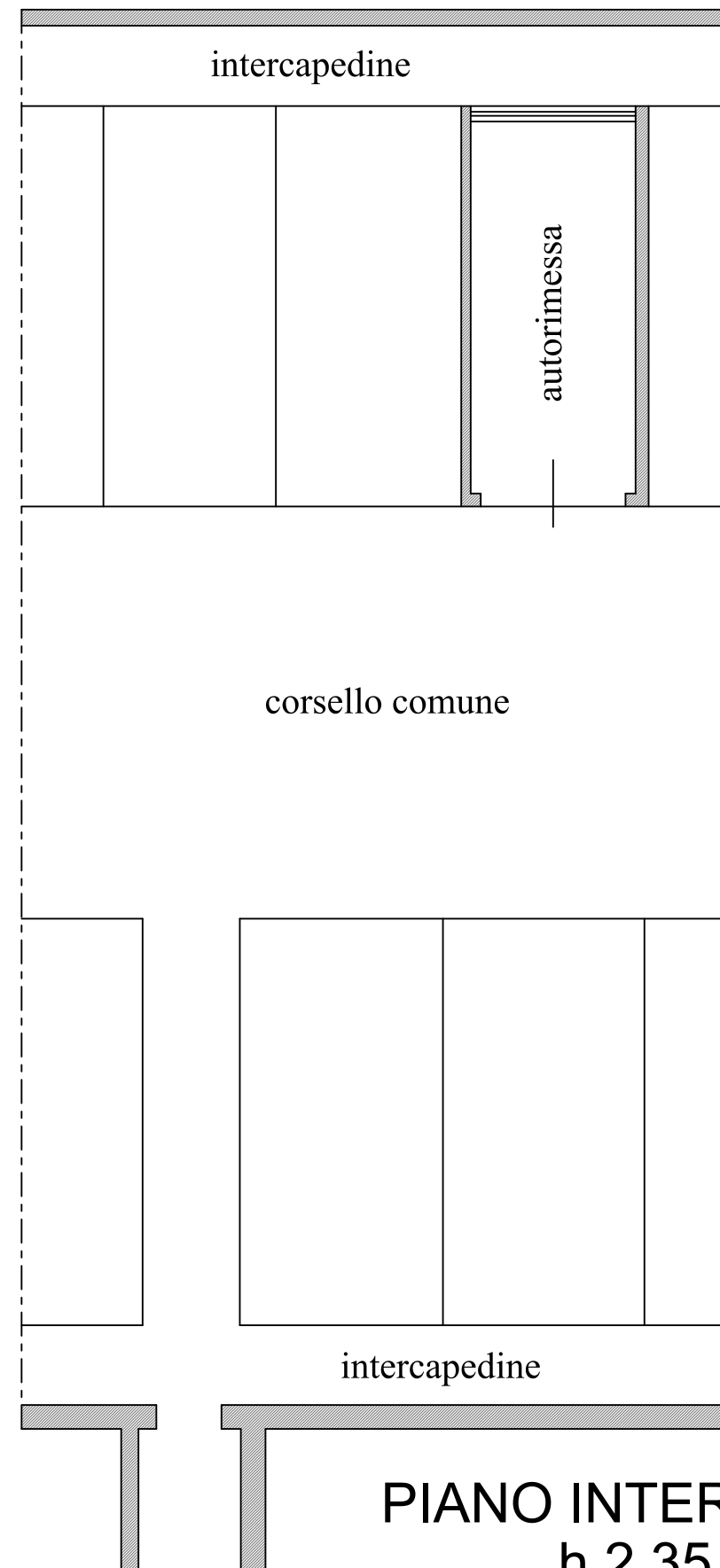


FARA GERA D'ADDA
 Provincia di Bergamo
 Via CARLO MOZZI, 2



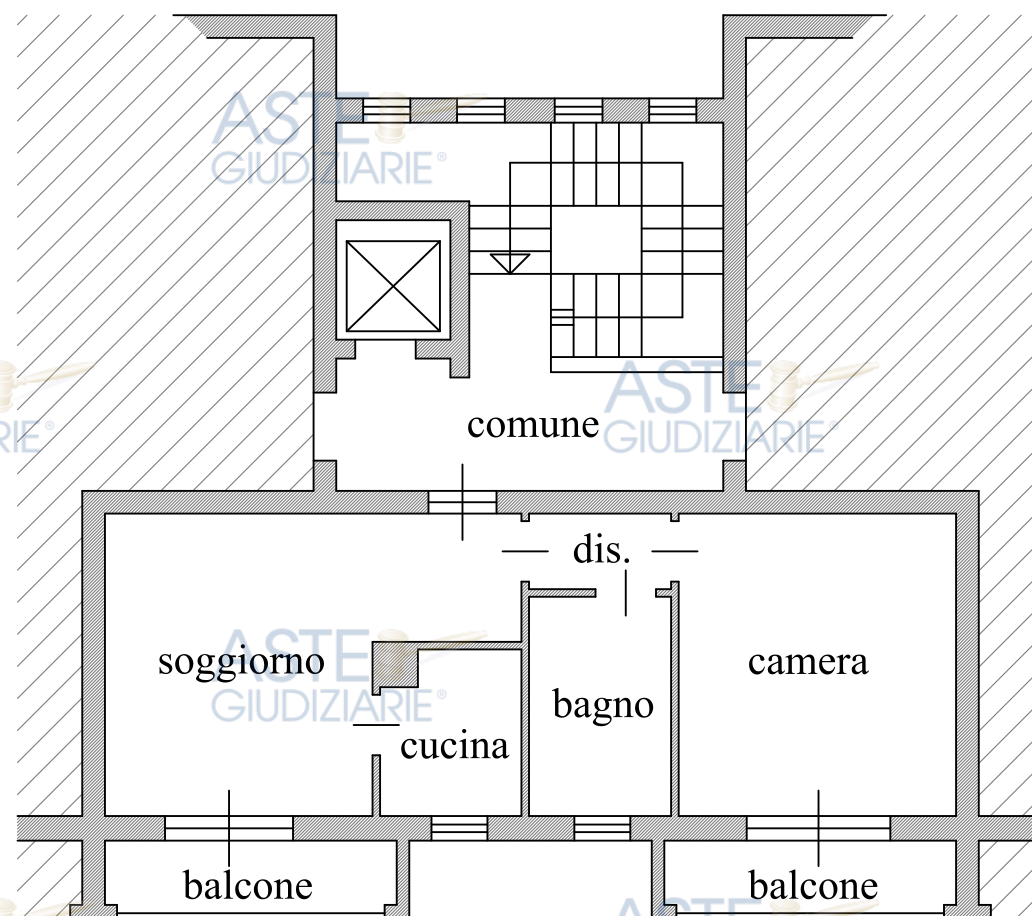
PIANO INTERRATO h.2.40



**PIANO INTERRATO
 h.2.35**

SUPERFICI LORDE

Appartamento P.1	51,30 mq.
balconi	8,00 mq.
Cantina	9,00 mq.
Autorimessa	14,00 mq.



PIANO PRIMO - h.2.70



ELABORATI GRAFICI
 - Scala 1:100 -